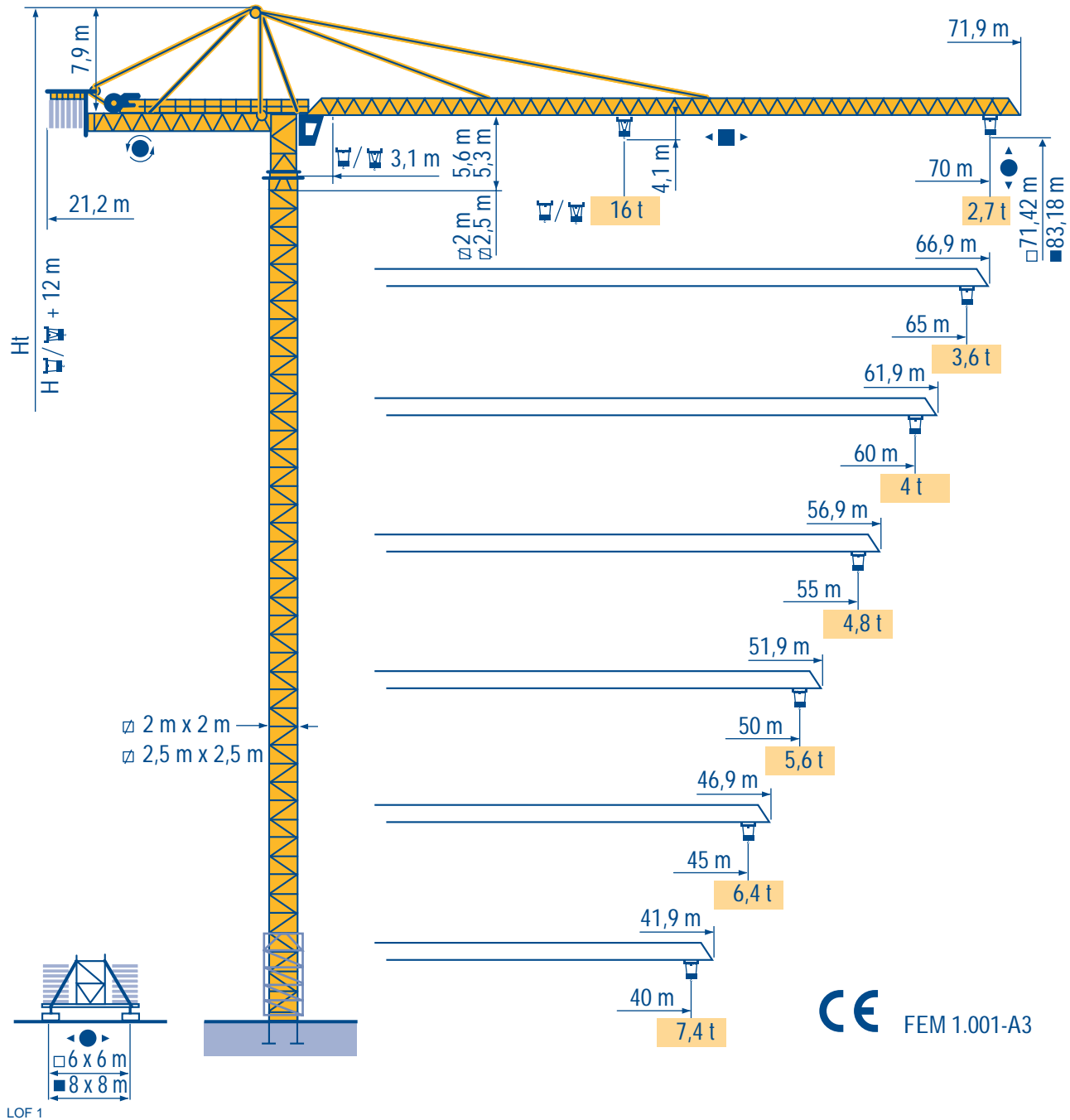


TOPKIT K40/27 C



HD



HDT



GTMR



CITY CRANE



TOPKIT MD



MR



MAXI MD



MAXI TOPKIT



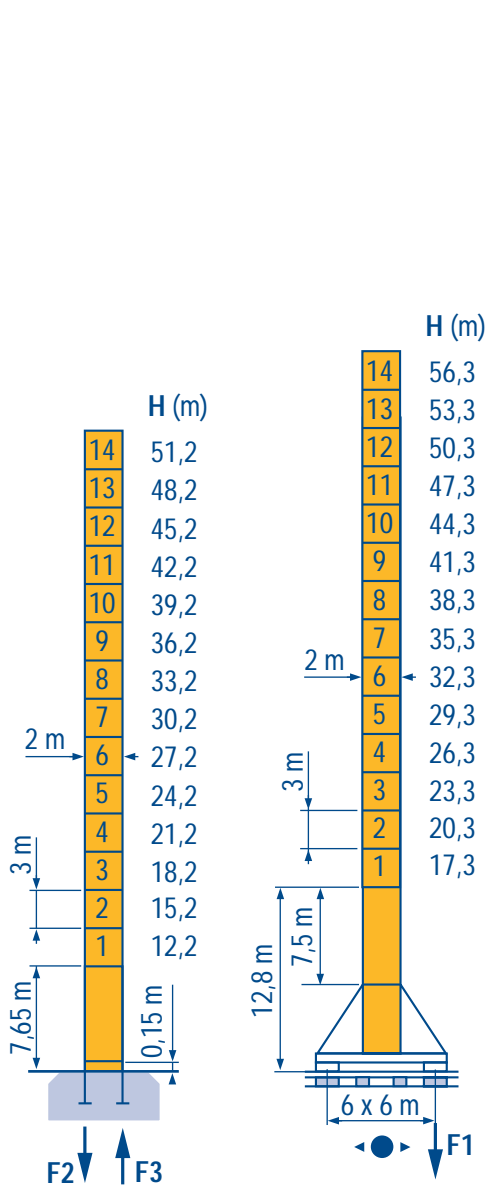
CE FEM 1.001-A3



POTAIN

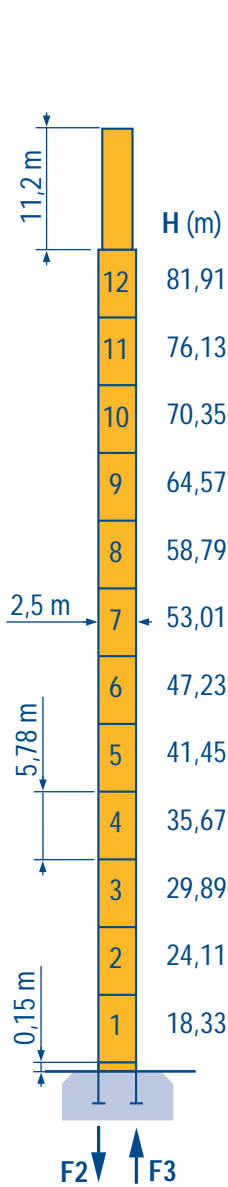
□ 2 m x 2 m

□ 2,5 m x 2,5 m

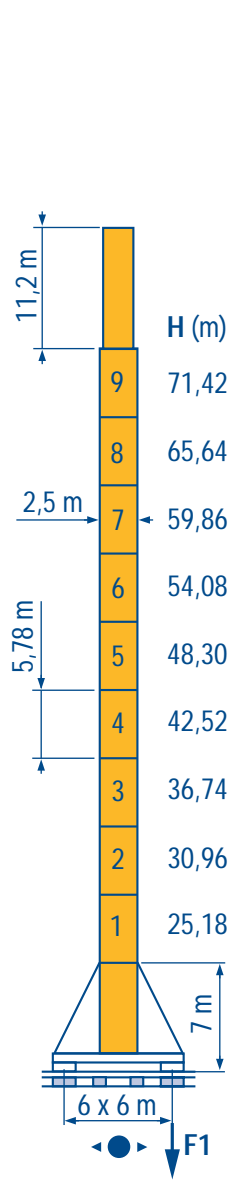


PA 683

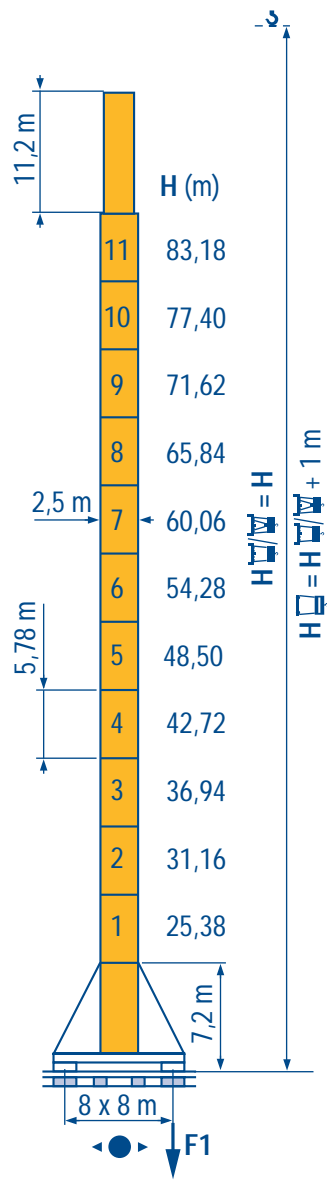
VB 683



PA 856



XA 857



YA 858

F2 ● 144 t ■ 124 t
F3 ● 99 t ■ 78 t

F1 ● 91 t ■ 86 t

F2 ● 165 t ■ 225 t
F3 ● 99 t ■ 163 t

F1 ● 113 t ■ 123 t

F1 ● 103 t ■ 126 t

75 t

88 t

99 t

105 t

116 t

LOF 1

● Réactions en service
■ Réactions hors service
▲ A vide sans lest avec flèche et hauteur maximum.

F

Reactions in service
Reactions out of service
Without load and ballast with longest jib and maximum height.

GB

Reazioni in servizio
Reazioni fuori servizio
A vuoto senza zavorra e con braccio massimo e altezza massima.

I

● Reaktionskräfte in Betrieb
■ Reaktionskräfte außer Betrieb
▲ Ohne Last und Ballast mit Maximalausleger und Maximalhöhe.

D

Reacciones en servicio
Reacciones fuera de servicio
Sin carga, sin lastre con flecha y altura máxima.

E

工作状态下的反应
非工作状态下的反应
空载, 无配重, 起重臂和高度均为最大值

C

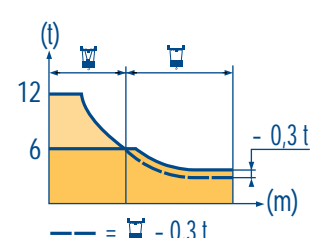
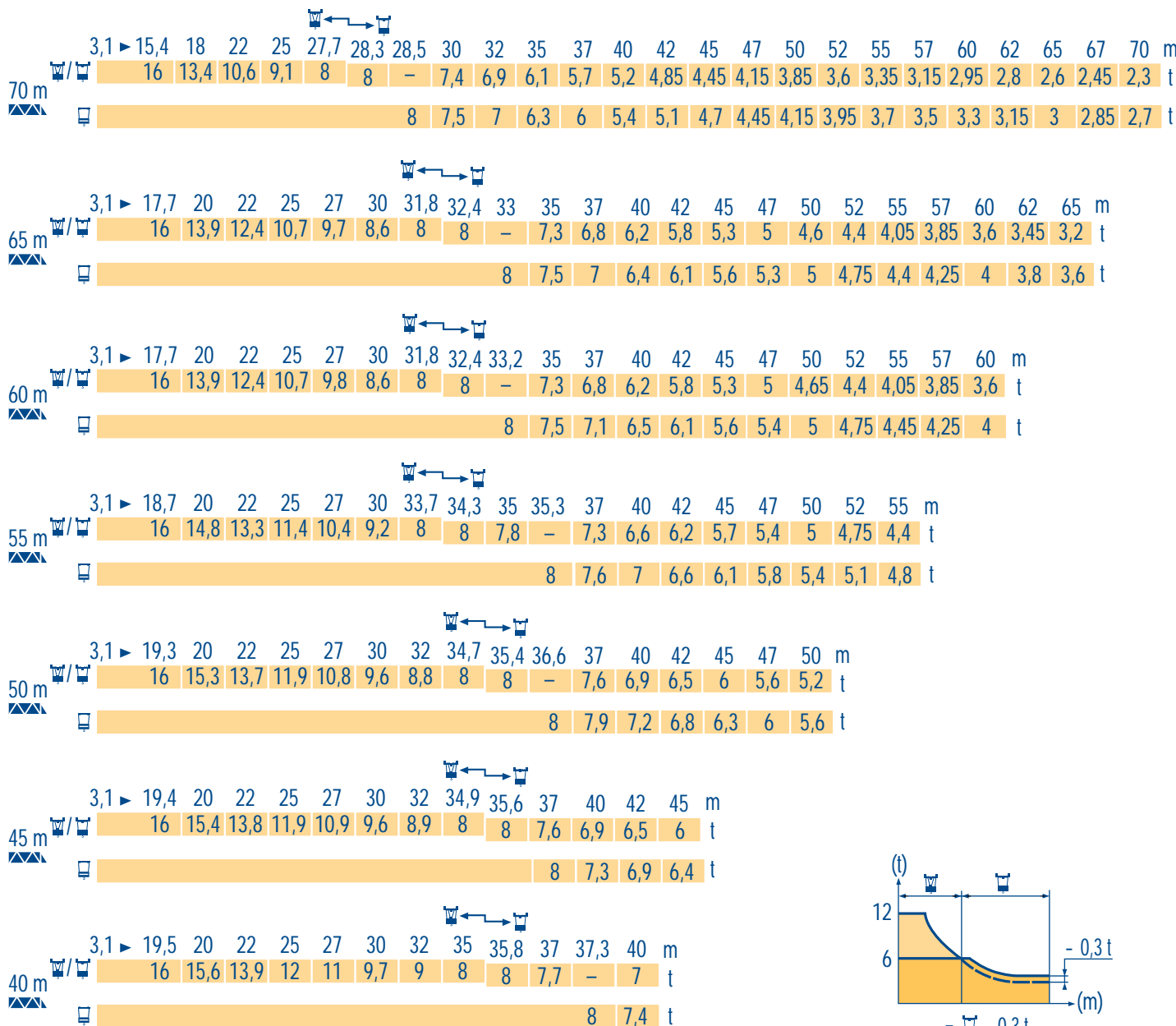
Courbes de charges
Lastkurven



Load diagrams
Curvas de carga



Curve di carico
负荷曲线



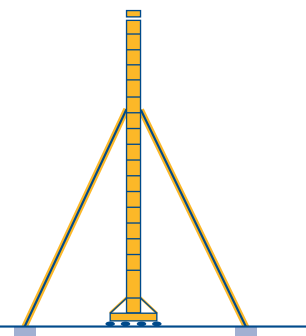
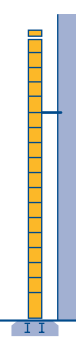
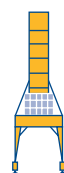
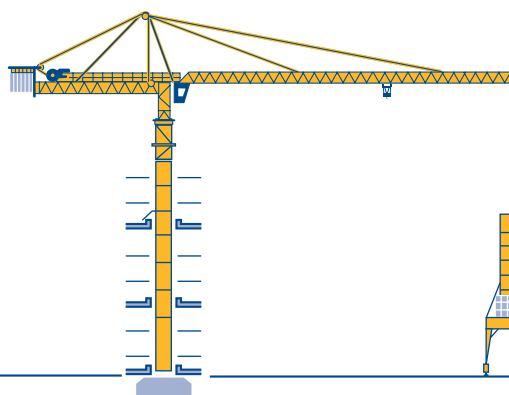
Autres implantations
Aufstellmöglichkeiten



Mounting possibilities
Otras implantaciones



Altre postazioni
其它安装



LOF 1



Nous consulter



Consult us



Consultateci



Auf Anfrage



Consultarnos



请向我方咨询



								ch - PS hp	kW		
	55 RCS 40	m/min	0 → 25	0 → 50	-	0 → 12,5	0 → 25	-	55	40,5	468 m > 468
		t	8	4	-	16	8	-			
	120 LMD 40 S	m/min	0 → 48	0 → 96	0 → 192	0 → 24	0 → 48	0 → 96	120	88	593 m > 593
		t	8	4	2	16	8	4			
	15 DRC 8	m/min	0 - 4 → 43 - 86						14	10,3	
	RTV	tr/min U/min rpm	0 → 0,7						2 x 12	2 x 8,8	
	VB 683 RT 443 A1 - 2V	m/min	15 - 30						4 x 5	4 x 3,7	
		TCV 649 ARC	m/min	10 - 50						4 x 6,8	4 x 5
	XA 857 RT 544 A1 - 2V	m/min	13,5 - 27						4 x 7	4 x 5,2	
		TCV 649 ARC	m/min	10 - 50						4 x 6,8	4 x 5
	YA 858 RT 544 A1 - 2V	m/min	13,5 - 27						4 x 7	4 x 5,2	
		TCV 649 ARC	m/min	10 - 50						4 x 6,8	4 x 5
CEI 38 IEC 38		kVA									
400 V (+6% -10%) 50 Hz		55 RCS 40 : 90 kVA 120 LMD 40S : 160 kVA						84/534 - 87/405			

LOF 1

	Levage	F	Hoisting	GB	Sollevamento	I
	Distribution		Trolleying		Distribuzione	
	Orientation		Slewing		Rotazione	
	Translation		Travelling		Traslazione	
	Conforme aux directives CEE 84/534 et 87/405 sur le niveau acoustique		In compliance with the EEC 84/534 and 87/405 Instructions on noise level		Conforme alle direttive CEE 84/534 e 87/405 sul livello acustico	
	Nous consulter		Consult us		Consultateci	
	Heben	D	Elevación	E	起升	C
	Katzfahren		Distribución		变幅	
	Schwenken		Orientación		回转	
	Kranfahren		Traslación		行走	
	Gemäss EWG-Richtlinien 84/534 und 87/405 für den Schall-Leistungspegel		Conforme con las directivas CEE 84/534 y 87/405 sobre el nivel acustico		符合 CEE 84/534 - CEE 87/405 声晌度规定	
	Auf Anfrage		Consultarnos		请向我方咨询	

Réf. 1997.52 LOF 1



18.Rue de Charbonnières, B.P. 173-F
69132 ECULLY Cedex
Tél. (33)04.72.20.20.20
Fax (33)04.72.20.20.00
http://www.potain.fr
E-mail : mkt@potain.fr

TOPKIT K40/27 C

Copyright.Reproduction interdite © POTAIN 1997

Deutschland
POTAIN GmbH Tel : 06.105.704.0
Italia
POTAIN S.p.A. Tel : 039.65.631
China
Zhangjiagang POTAIN Tel : 520. 877.1451

修改我方
 Modifiche riservate
 Modificaciones reservadas
 Subject to modification
 Änderungen vorbehalten
 Modifications réservées
 Printed in France
 Réalisation SODIPE