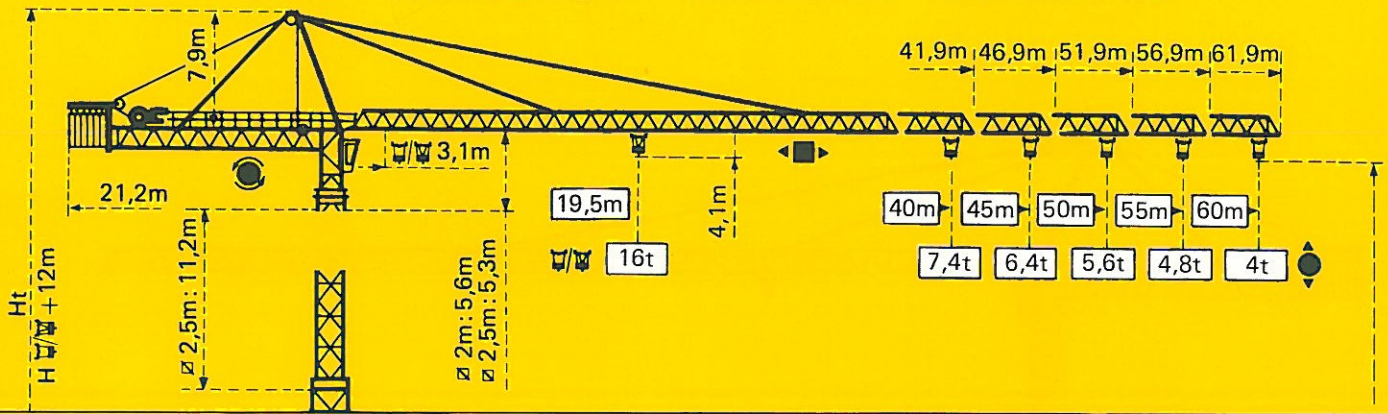


TOPKIT H40/40C

POTAIN 

Cotes Abmessungen Dimensions Dimensiones



Mature Mast Mast Mástil
 2m x 2m

PA 683

VB683

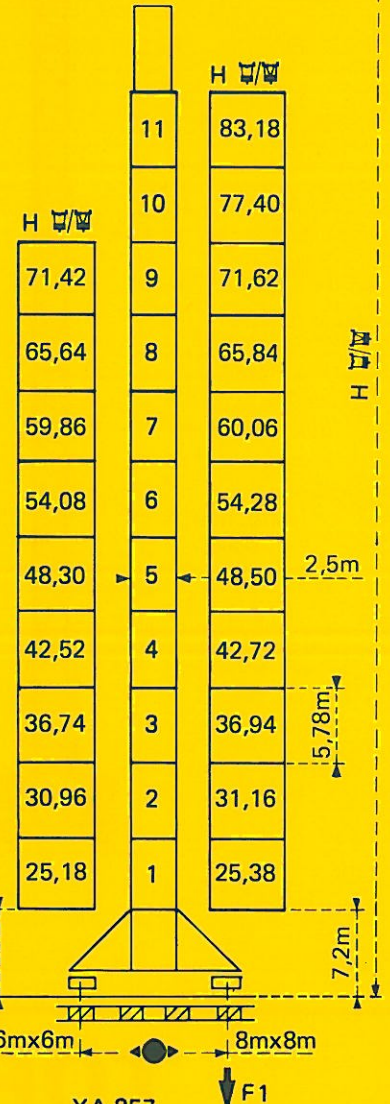
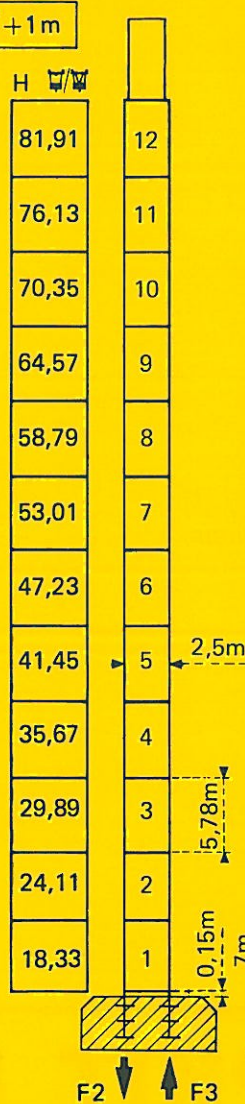
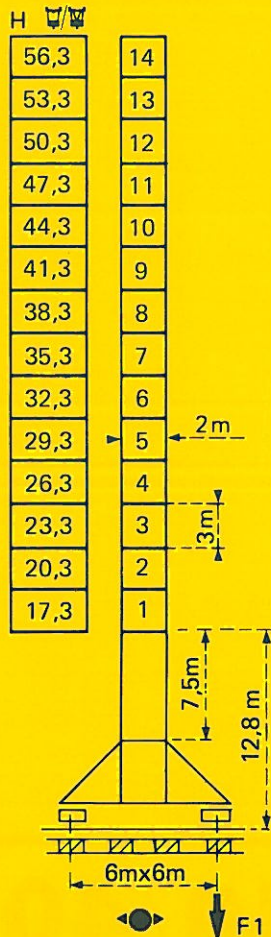
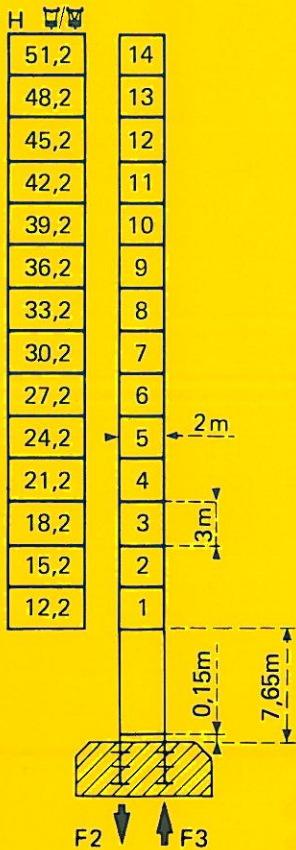
Mature Mast Mast Mástil
 2,5m x 2,5m

PA 856

XA 857

YA 858

$$H_{\text{Mast}} = H_{\text{Jib}} + 1\text{m}$$



F = Réactions Eckdrücke Reactions Reacciones

F1	● 113 t	■ 116 t
	102,9 t	

F2	● 142 t	■ 111 t
F3	● 92 t	■ 68 t
	72 t	

F1	● 91 t	■ 80 t
	85 t	

F2	● 165 t	■ 213 t
F3	● 99 t	■ 157 t
	98t	

F1	● 103 t	■ 121 t
	115t	

Courbes de charges

Lastkurven

Load diagrams

Curvas de cargas



Flèche Ausleger Jib Flecha

3,1	→	17,7	20	22	25	27	30	31,8	32,4	35	37	40	42	45	47	50	52	55	57	60	m
16		13,9	12,4	10,7	9,8	8,6	8	8	7,3	6,8	6,2	5,8	5,3	5	4,65	4,4	4,05	3,85	3,6		t



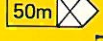
60m	3,1	→	33,2	35	37	40	42	45	47	50	52	55	57	60	m
8	7,5	7,1	6,5	6,1	5,6	5,4	5	4,75	4,45	4,25	4				t

3,1	→	18,7	20	22	25	27	30	33,7	34,3	35	37	40	42	45	47	50	52	55			m
16		14,8	13,3	11,4	10,4	9,2	8	8	7,8	7,3	6,6	6,2	5,7	5,4	5	4,75	4,4				t



55m	3,1	→	35,3	37	40	42	45	47	50	52	55				m
8	7,6	7	6,6	6,1	5,8	5,4	5,1	4,8							t

3,1	→	19,3	20	22	25	27	30	32	34,7	35,4	37	40	42	45	47	50					m
16		15,3	13,7	11,9	10,8	9,6	8,8	8	8	7,6	6,9	6,5	6	5,6	5,2						t



50m	3,1	→	36,6	37	40	42	45	47	50						m
8	7,9	7,2	6,8	6,3	6	5,6									t

3,1	→	19,4	20	22	25	27	30	32	34,9	35,6	37	40	42	45							m
16		15,4	13,8	11,9	10,9	9,6	8,9	8	8	7,6	6,9	6,5	6								t



45m	3,1	→	37	40	42	45									m
8	7,3	6,9	6,4												t

3,1	→	19,5	20	22	25	27	30	32	35,1	35,8	37	40									m
16		15,6	13,9	12	11	9,7	9	8	8	7,7	7										t

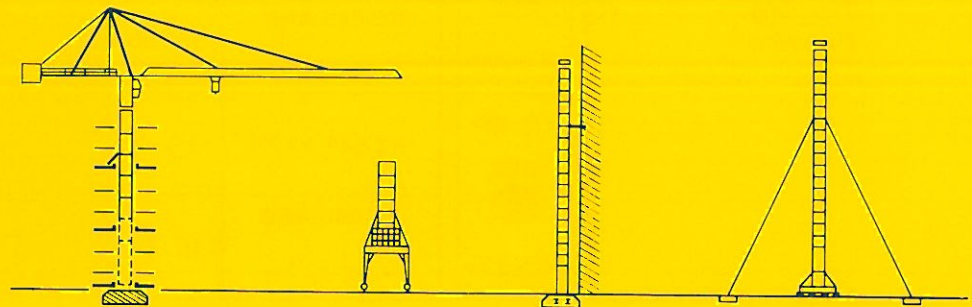


40m	3,1	→	37,3	40											m
8	7,4														t

- ☞ Chariot standard 2/4 brins (En cas d'utilisation déduire 0,1 t aux charges ☞).
- ☞ Chariot optionnel 2 brins uniquement.
- ☞ Standardlaufkatze 2/4 Stränge. (Bei Einsatz von ☞ ist 0,1 t der Lasten von ☞ abzuziehen.
- ☞ Laufkatze in Sonderausführung mit nur 2 Strängen.
- ☞ Standard trolley 2/4 fall (When using ☞ subtract 0,1t from the loads ☞).
- ☞ Optional trolley fall only.
- ☞ Carro standard 2/4 ramales (En caso de utilizacion ☞ quitar 0,1 t de las cargas ☞).
- ☞ Carro opcional en 2 ramales solamente.

Autres implantations Aufstellmöglichkeiten Mounting possibilities Otras implantaciones

Nous consulter
Auf Anfrage
Consult us
Consultarnos



H > H maxi : nous consulter

- En service
- Hors service

☞ A vide sans lest avec flèche et hauteur maximum.

H > H maxi : Auf Anfrage

- In Betrieb
- Ausser Betrieb

☞ Ohne Last und Ballast mit Maximalausleger und Maximalhöhe.

H > H maxi : consult us

- In service
- Out of service

☞ Without load and ballast with longest jib and maximum height.

H > H máxi : Consultarnos

- En servicio
- Fuera de servicio


















☞ Sin cargas, sin lastre con flecha y altura máxima.

Mécanismes

Antriebe




Mechanisms

Mecanismos

				m/min	t		ch-PS hp	kW	
Levage Heben Hoisting Elevación	Treuil standard Standardhubwerk Standard hoist winch Mecanismo standard	55 RCS 40 			0 → 25	8	468m > 468m*	55	40,5
				0 → 50	4				
					0 → 12,5	16			
				0 → 25	8				
	Treuil optionnel Wahlweises Hubwerk Optional winch Mecanismo opcional	120 LMD 40 S 			0 → 48	8	593m > 593m*	120	88
				0 → 96	4				
				0 → 192	2				
					0 → 24	16			
				0 → 48	8				
				0 → 96	4				

Distribution - Katzfahren Trolleying - Distribución		15 DRC 8	0 - 4 4 → 43 43 - 86				14	10,3
--	---	----------	----------------------------	--	--	--	----	------

Orientation - Schwenken Slewing - Orientación		OMD 85	0 → 0,8 tr/min U/min-rpm				2 x 12	2 x 8,8
--	---	--------	--------------------------------	--	--	--	--------	---------

Translation Kranfahren Travelling Traslación	VB 683  R ≥ 12m	RT 443 A1 2V	15 - 30				4 x 5	4 x 3,7
		RC 646 ARC H ≤ 41,3m	10 - 50				4 x 6,8	4 x 5
	XA 857  R ≥ 20m	RT 544 A1 2V	13,5 - 27				4 x 7	4 x 5,2
		RC 646 ARC H ≤ 42,5m	10 - 50				4 x 6,8	4 x 5
	YA 858  R ≥ 32m	RT 544 A1 2V	13,5 - 27				4 x 7	4 x 5,2
		RC 646 ARC H ≤ 42,7 m	10 - 50				4 x 6,8	4 x 5

Réseau - Netzstrom - Mains supply - Red	380V - 50 HZ
Puissance électrique nécessaire - Anschlusswert - Necessary electric power - Potencia eléctrica necesaria	RCS : 90 KVA LMD : 160 KVA
Groupe électrogène - Stromaggregat - Generator set - Grupo electrogeno	*

*Nous consulter - Auf Anfrage - Consult us - Consultarnos

NF E52081 - 82

POTAIN

18, rue de Charbonnières B.P 173 - F 69132 ECULLY Cedex
Tél. (7) 833.81.81 - Télex 330 179 F

POTAIN GmbH - D 6082 MÖRFELDEN WALLDORF
Nordendstr. 79-87 - Postfach 420 - Tel. 06105 704.0 - Telex 4.185745
POTAIN SUISSE S.A - CH 5115 MÖRIKEN WILDEGG
Tel. 64.53.19.91 - Telex 981406

TOPKIT H40/40C

Ref. 8534 KPD 1