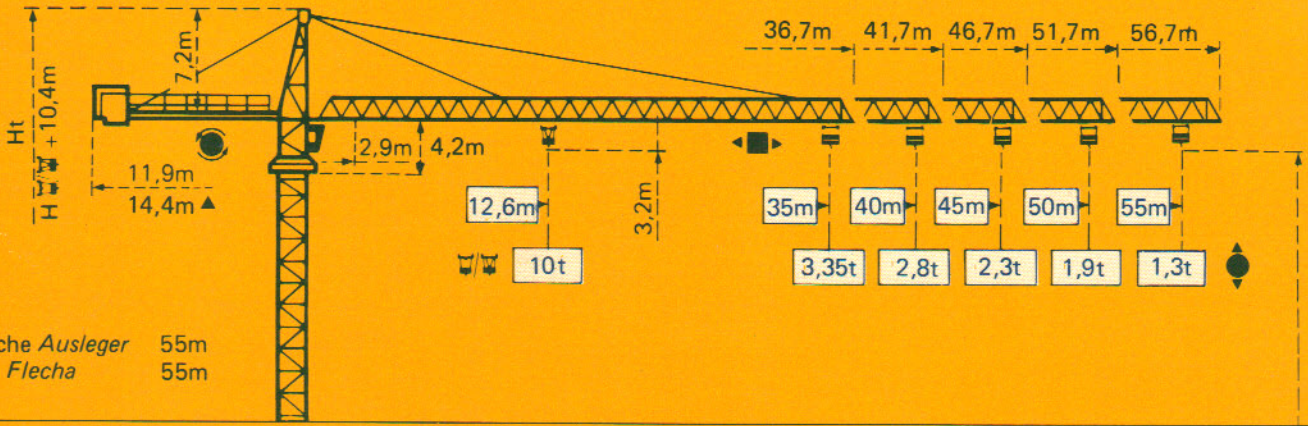


TOPKIT G25 / 13C

POTAIN 

Cotes Abmessungen Dimensions Dimensiones



▲ Flèche Ausleger 55m
▲ Jib Flecha 55m

Mâtère Mast Mast Mástil
□ 1,6m x 1,6m

Mâtère Mast Mast Mástil
□ 2m x 2m

PA455

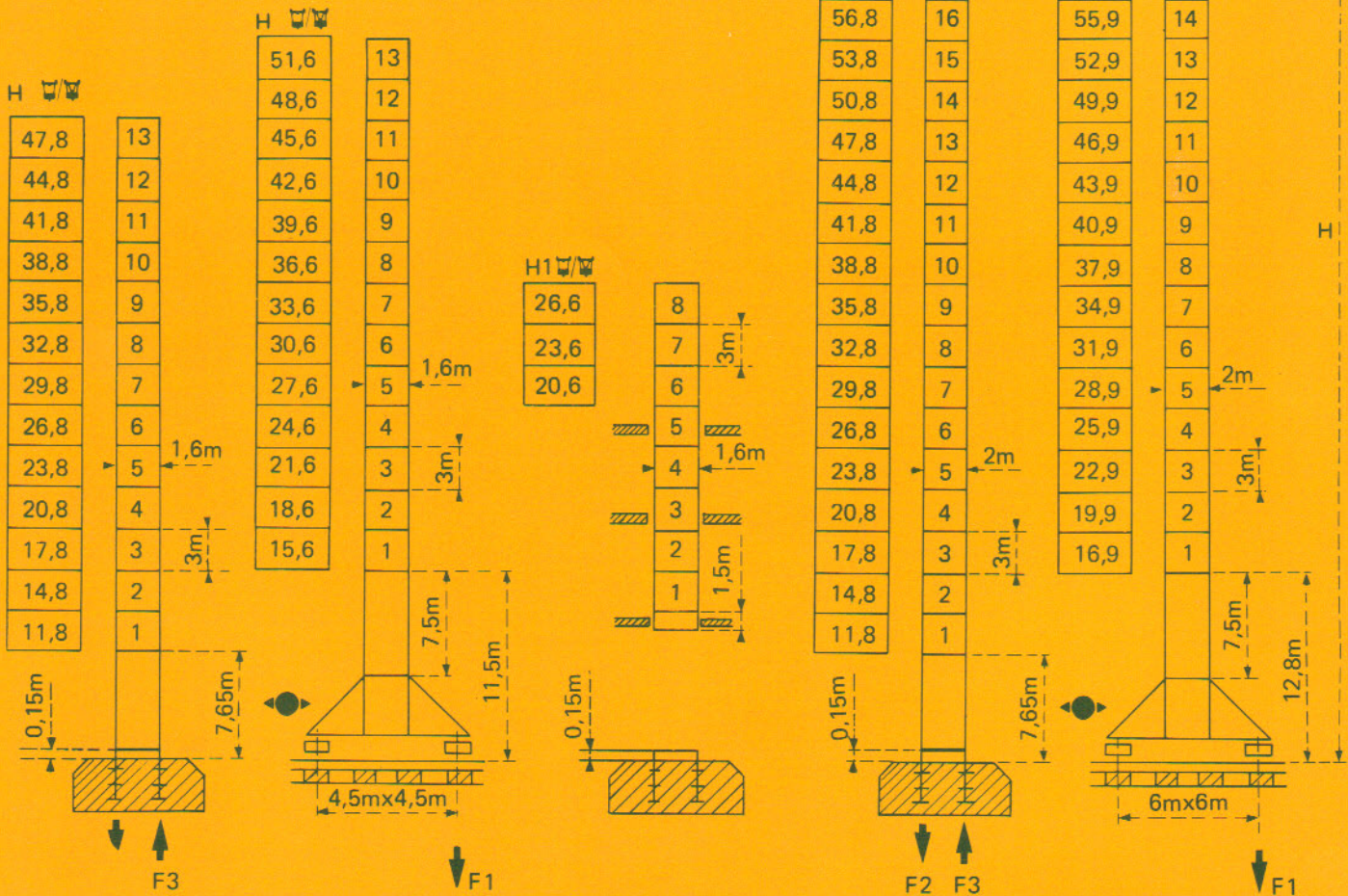
SB455

BA45A


PA663


VB 663

$$H_{\square} = H_{\square/\square} + 0,7m$$





F = Réactions Eckdrücke Reactions Reacciones

F2	● 92t	■ 132t
F3	● 64t	■ 107t
	37t	

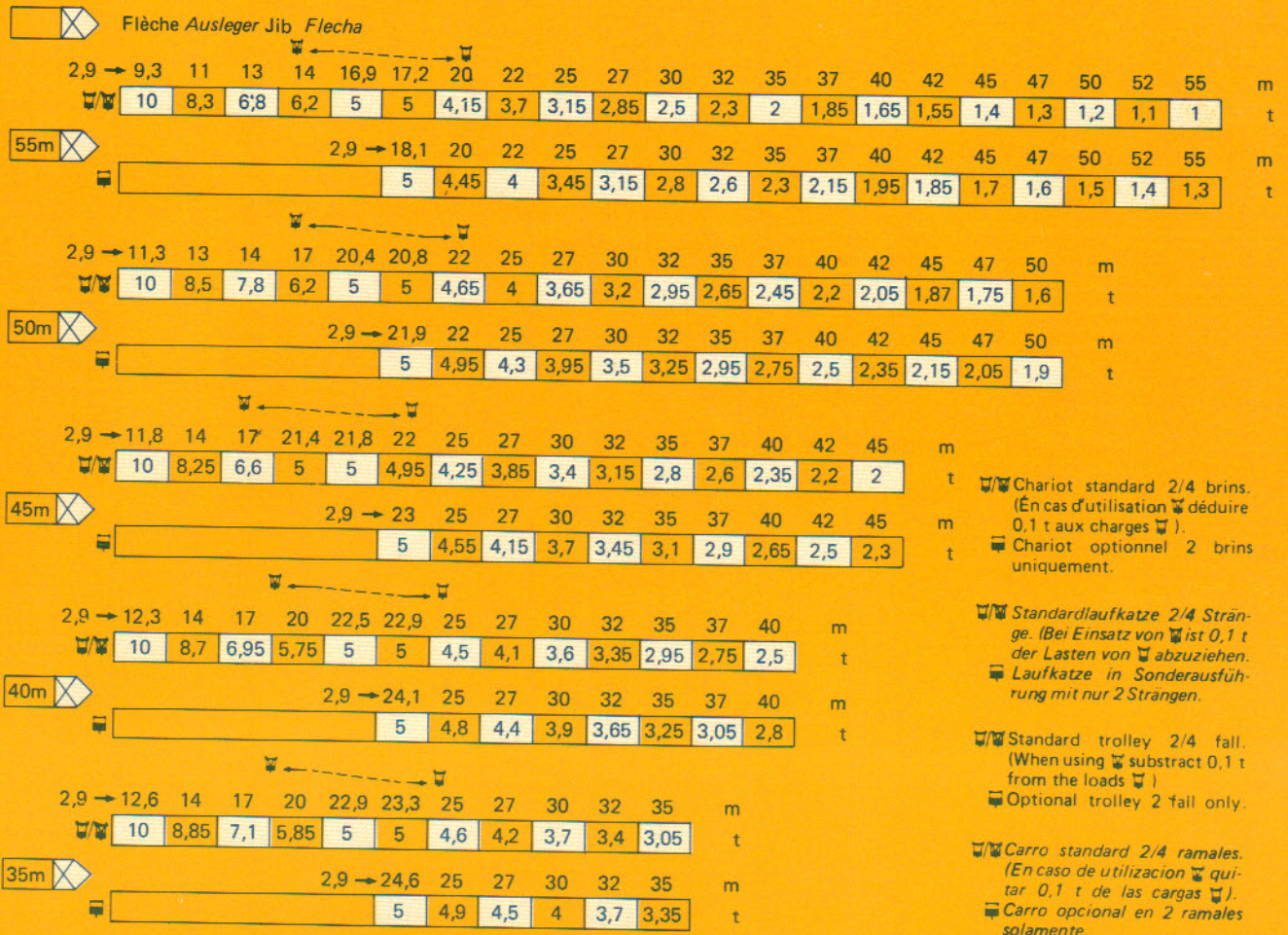
F1	● 71t	■ 96t
	46t	

Voir ci-contre
Siehe nebenstehend
See opposite
Ver página opuesta

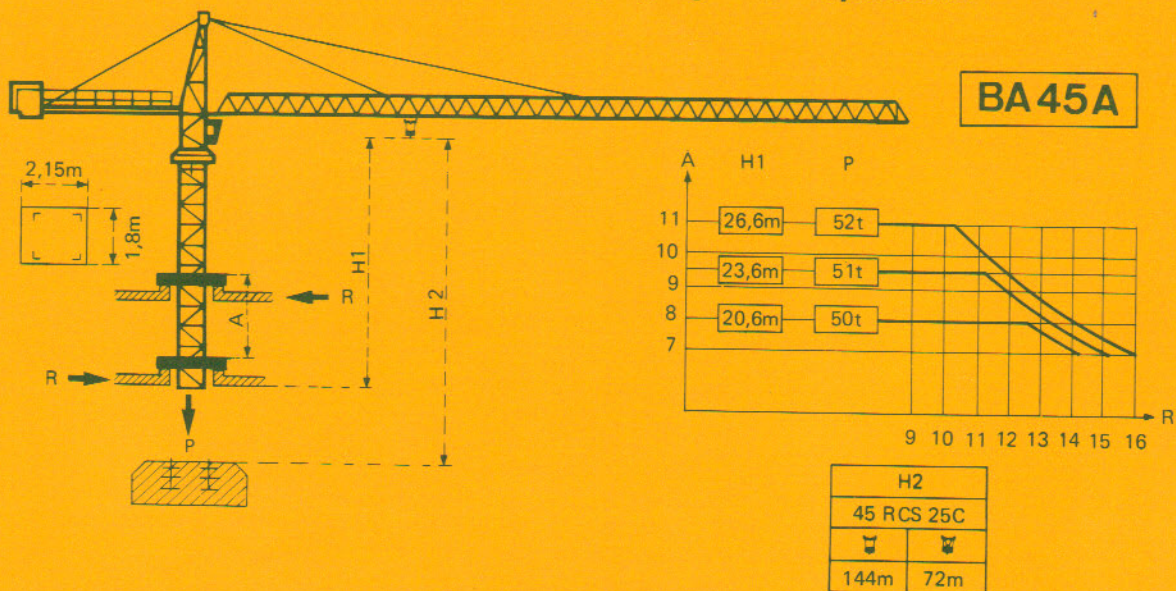
F2	● 99t	■ 165t
F3	● 66t	■ 134t
	42t	

F1	● 80t	■ 115t
	61t	

Courbes de charges Lastkurven Load diagrams Curvas de cargas















Télescopage sur dalles - Ketterkrane im Gebäude Climbing crane - Telecompage gruas trepadoras



A Distance entre cadres A Abstand zwischen den Rahmen A Distance between collars A Distancia entre marcos
 H1 Hauteur grue H1 Kranhöhe H1 Crane height H1 Altura grúa
 P Poids de la grue P Krangewicht P Crane weight P Peso de la grúa
 R Réaction horizontale R Horizontalkräfte R Horizontal reaction R Reacción horizontal

● En service ● In Betrieb ● In service ● En servicio
 ■ Hors service ■ Ausser Betrieb ■ Out of service ■ Fuera de servicio
 A vide sans lest avec flèche et hauteur maximum. A Ohne Last und Ballast mit Maximalausleger und Maximalhöhe. A Without load and ballast with longest jib and maximum height. A Sin cargas, sin lastre con flecha y altura máxima.

Mécanismes Antriebe Mechanisms Mecanismos

				m/min	t		ch-PS hp	kW
Levage Heben Hoisting Elevación	45 RCS 25 C 			0 → 32	5	287 m	45	33
				0 → 64	2,5			
				0 → 16	10	> 287 m *		
				0 → 32	5			
Distribution - <i>Katzfahren</i> Trolleying - <i>Distribución</i>		6 DPC 4	7,5 30 60				6	4,4
Orientation - <i>Schwenken</i> Slewing - <i>Orientación</i>		OMD	0 → 0,7 tr/min U/min-rpm				8	5,9
Translation Kranfahren Travelling Traslación	SB 455  R ≥ 10m	RT 324C2 2V	12,5-25				2 x 7	2 x 5,2
		RT 324C1 2V						
	VB 663  R ≥ 13m	RC 446 ARC H ≤ 33,6 m	10 - 50				4 x 6,8	4 x 5
		RT 443 A1 2V	15 - 30				4 x 5	4 x 3,7
		RC 646 ARC H ≤ 43,9 m	10 - 50				4 x 6,8	4 x 5
Réseau - <i>Netzstrom</i> - Mains supply - <i>Red</i>							380V - 50 HZ	
Puissance électrique nécessaire - <i>Anschlusswert</i> - Necessary electric power - <i>Potencia electrica necesaria</i>							RCS : 70 kVA	
Groupe électrogène - <i>Stromaggregat</i> - Generator set - <i>Grupo electrogeno</i>								

*Nous consulter - *Auf Anfrage* - Consult us - *Consultarnos*

NF E52081 - 82

POTAIN

18, rue de Charbonnières B.P 173 - F 69132 ECULLY Cedex
Tél. (7) 833.81.81 - Télex 330 179 F

POTAIN GmbH - D 6082 MÖRFELDEN WALLDORF
Nordendstr. 79-87 - Postfach 420 - Tel. 06105 704.0 - Telex 4.185745
POTAIN SUISSE S.A - CH 5115 MÖRIKEN WILDEGG
Tel. 64.53.19.91 - Telex 68294

TOPKIT G25/13C

Réf. 8447 KMM 1

Modifications réservées - Änderungen vorbehalten - Subject to modification - Modificaciones reservadas

Printed in France