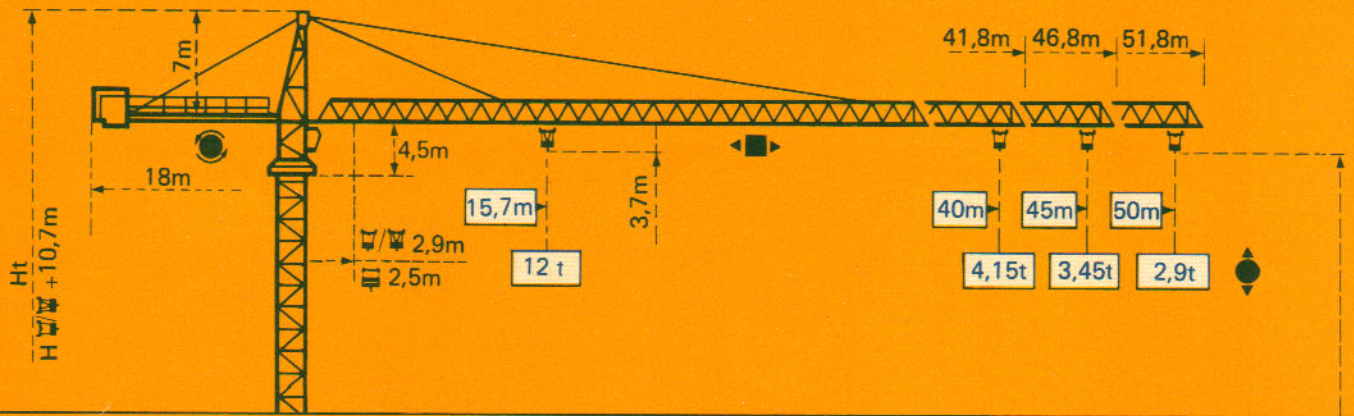


TOPKIT F3/29B

POTAIN 



Mâtère Mast Mast Mástil
 □ 1,6m x 1,6m

Mâtère Mast Mast Mástil
 □ 2m x 2m

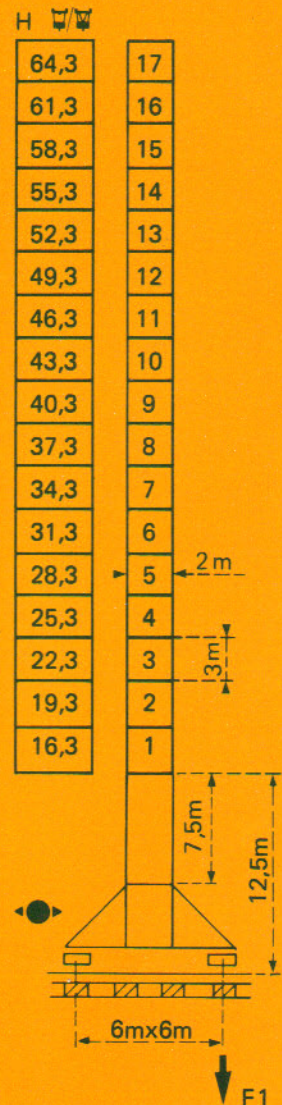
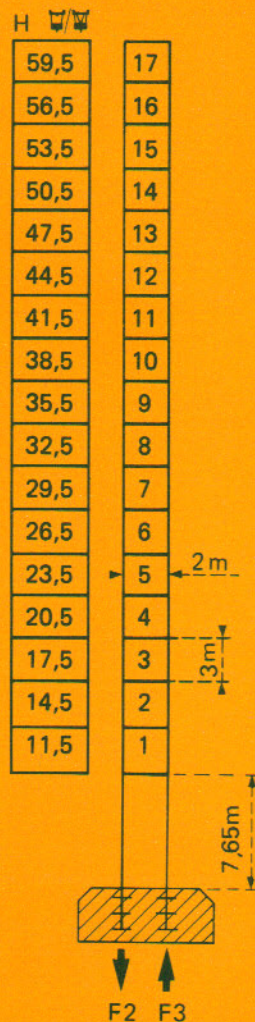
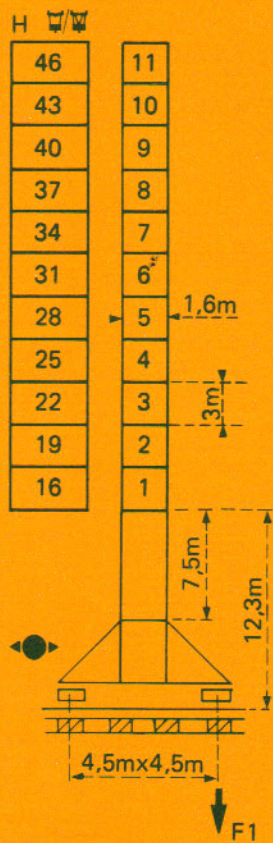
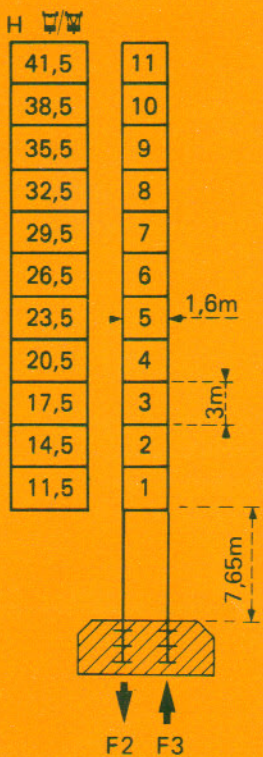
PA 458

SA 458


PA 664


VA 664


$$H_{\square} = H_{\square/\square} + 1m$$




F = Réactions Eckdrücke Reactions Reacciones

F2	● 109 t	■ 90 t
F3	● 75 t	■ 60 t
	51,6 t	

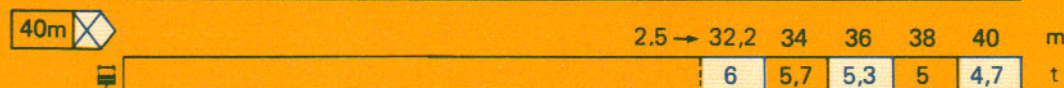
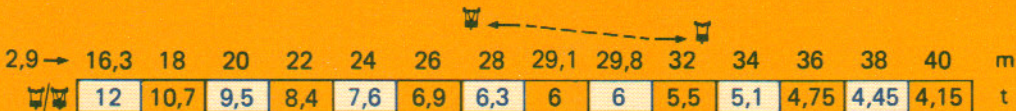
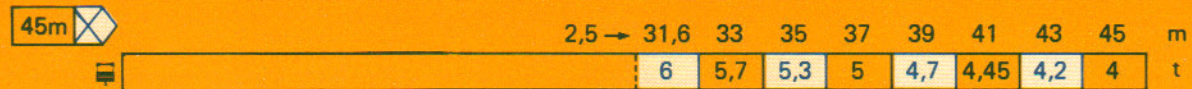
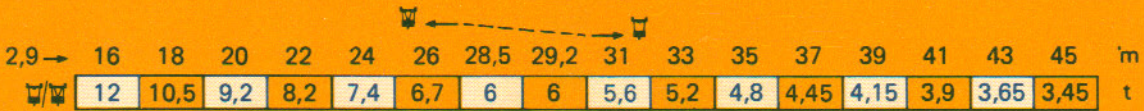
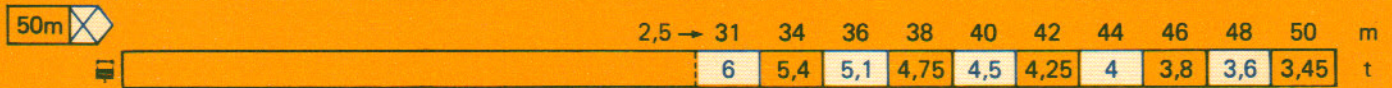
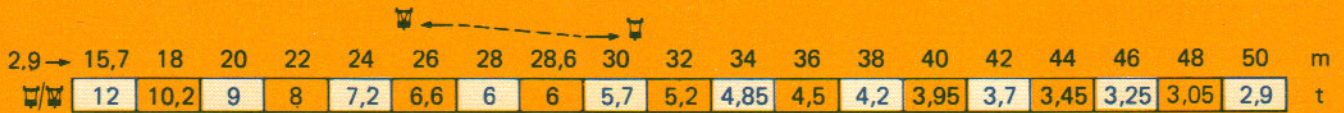
F1	● 72 t	■ 69 t
	60,6 t	



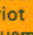

F2	● 117 t	■ 177 t
F3	● 78 t	■ 139 t
	63,2 t	





F1	● 94 t	■ 121 t
	81,2 t	


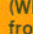
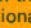

Courbes de charges Lastkurven Load diagram Curvas de cargas



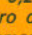

 Flèche Ausleger Jib Flecha



 Chariot standard 2/4 brins.
(En cas d'utilisation  déduire
0,2 t aux charges ).
 Chariot optionnel 2 brins
uniquement.

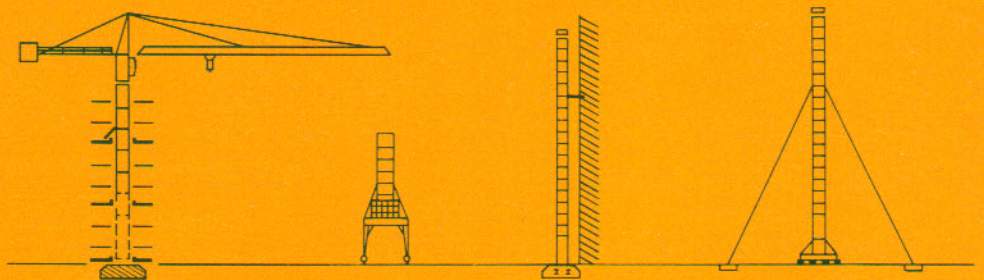
 Standardlaufkatze 2/4 Strän-
ge. (Bei Einsatz von  ist 0,2 t
der Lasten von  abzuziehen.
 Laufkatze in Sonderausfüh-
rung mit nur 2 Strängen.

 Standard trolley 2/4 fall.
(When using  subtract 0,2 t
from the loads ).
 Optional trolley 2 fall only.

 Carro standard 2/4 ramales.
(En caso de utilizacion  quitar
0,2 t de las cargas ).
 Carro opcional en 2 ramales
solamente.


Autres implantations Aufstellmöglichkeiten Mounting possibilities Otras implantaciones

Nous consulter
Auf Anfrage
Consult us
Consultarnos




H > H maxi : nous
consulter

- En service
- Hors service

 A vide sans lest avec
flèche et hauteur maximum.


H > H maxi : Auf
Anfrage

- In Betrieb
- Ausser Betrieb

 Ohne Last und Ballast
mit Maximalausleger und
Maximalhöhe.


H > H maxi : consult us

- In service
- Out of service


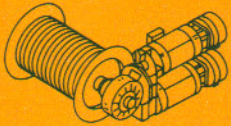





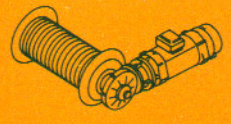










 Without load and ballast
with longest jib and maxi-
mum height.

H > H máxi : Consultarnos

- En servicio
- Fuera de servicio

 Sin cargas, sin lastre con
flecha y altura máxima.

Mécanismes Antriebe Mechanisms Mecanismos

					m/min	t		ch-PS hp	kW
Levage Heben Hoisting Elevación		55 RCS 30 	 	 	34 68	6 3	365m >365m *	55	40,5
					17 34	12 6			
		33 PC 30 	 	 	3,5 19 38	6 6 3	408m >408m *	33	24
					1,75 9,5 19	12 12 6			
Distribution - <i>Katzfahren</i> Trolleying - <i>Distribución</i>			6 DPC 4		7,5 30 60			6	4,4
Orientation - <i>Schwenken</i> Slewing - <i>Orientación</i>			OMD 55		0 → 0,8 tr/min U/min-rpm			2 x 8	2 x 5,9
Translation <i>Kranfahren</i> Travelling <i>Traslación</i>	▲ Standard <i>Standard</i> Standard <i>Standard</i> ▲▲ Changement de poste <i>Umsetzen</i> Repositioning <i>Cambio de sitio</i> ▲▲▲ Rapide <i>Schnell</i> Fast <i>Rápida</i>	SA 458  R ≥ 9m	▲ RT 324 C1 2V	12,5-25			2 x 7	2 x 5,2	
			▲▲ RT 325 C1	16			2 x 5	2 x 3,7	
			▲▲▲ RC 446 AR H ≤ 31 m	10-50			4 x 6,8	4 x 5	
			VA664  R ≥ 12m	▲ RT 443 A1 2 V	15-30			4 x 5	4 x 3,7
				▲▲ RT 426 C1	16			2 x 6,5	2 x 4,8
				▲▲▲ RC 646 AR H ≤ 43,3m	10-50			4 x 6,8	4 x 5
Puissance électrique nécessaire <i>Anschlusswert</i> Necessary electric power <i>Potencia electrica necesaria</i>		380 V 50 HZ 	Réseau - <i>Netzstrom</i> - Mains supply - <i>Red</i>				RCS : 75kVA PC : 60kVA		
			Groupe électrogène <i>Stromaggregat</i> Generator set <i>Grupo electrogeno</i>				*		

* Nous consulter - *Auf Anfrage* - Consult us - *Consultarnos*

POTAIN

18, rue de Charbonnières B.P 173 - 69132 ECULLY Cedex
Tél. (7) 833.81.81 - Télex 330 179
DIRECTION DES ACTIVITES INTERNATIONALES
207, rue de Bercy - 75012 PARIS
Tél. (1) 347.30.77 - Télex 215 483
POTAIN GmbH - D 6082 MÖRFELDEN - WALLDORF
Nordendstr. 79-87 - Postfach 420 - Tel. (19.49) 6105 704.0 - Telex 4.185745
POTAIN SUISSE S.A. - CH 5115 MÖRIKEN WILDEGG
Tel. 64.53.19.91 - Telex 68294

Ref. 8109 FAC9